



MAY-JUN 2024

VOLUME 2 ISSUE 3

## Growing the Solutions to What Ails Us

With the growing health crisis in our country and the rising prices of pharmaceuticals, many of us are looking for other, less expensive, and more natural approaches to our health issues. While traditional medicine certainly holds an important place in treating complicated health conditions, sometimes there are simpler ways to treat less serious ailments. If we look to nature instead of a pill, we can often find a simple fix to what ails us right in our own gardens, helping us to avoid complicated side effects.

We spoke with a budding holistic medicine enthusiast and one of our own Master Gardeners of Wilson County, Joeleen Davis, to learn some of her thoughts and advice on finding our own paths into natural healing.

**Q?:** We are hearing more and more about growing our own medicines in our garden. We hear the phrases “Farmacy” or “Nature’s Apothecary,” but it feels a little intimidating to look to our garden instead of our pharmacy for cures to what ails us. What made you get started looking for health solutions in your garden?

**Joeleen:** *I suffered a debilitating back injury a few years ago that required two back surgeries. I was told last year that I would need another one. I focused on plants with anti-inflammatory benefits, salves for pain, and acupuncture. It has helped me so much. I just can’t stress enough the healing there is in plants. They have changed my life.*

**Q?:** We read that many of the medicines that are being developed now in labs through synthetic/chemical means don’t have the same therapeutic effects, and may even have negative side effects, compared to using a whole plant source. How does one go about ensuring their safety when growing medicinal plants?

**Joeleen:** *The first thing I would do is educate yourself. Read books, and a lot of them. My favorite “garden” books to read are the old ones. A field guide is great to take into nature and gardens with you too, however, do not use an illustration as a guide for identifying any plant, flower, or root. A lot of plants have poisonous “look alikes.” A photograph with a detailed description is best.*

*Continued on Page 2*

### In This Issue:

Feature Article, pp.1-2  
Presidents Note, p.3  
Springfest in the Grove, p.3  
General Meeting Recap, p.4  
Native Plant Sale, pp.5-8  
Conservation Conversations, p.9  
Ask Lucas Series, p.9  
Spring Fling, p.10  
The Garden Buzz, p.11  
The Recipe Box, p.12  
Summer Gardening Camp, p.12  
Farm Days, p.12  
MGWC Garden Tour, p.13  
Meet the Master Gardener, p.14  
Tomato Humor, p.14  
Intern Graduate List, p.14  
Volunteer Projects, pp.15-16  
Project Updates & Needs, p.17  
UTHort Events, p.17  
Garden Humor, p.17  
MGWC Upcoming Events, p.18  
UT Ext Garden Calendar, p.18  
Media Review, p.19  
Scholarship Recipient, p.19  
TEMG State Conference, p.20



**Q?:** What are some plants that are good for beginners to try?

**Joeleen:** *I would start with an outside container of herbs, chives, and lettuce. The most important thing to understand as a beginner is soil composition. If your soil is good, your plants will be so happy and do well for you.*

**Q?:** Should one worry about taking herbal remedies if they are currently on medications?

**Joeleen:** *As with anything, there can be side effects. I would talk to my doctor or pharmacist.*

**Q?:** What herb did you start with when you became interested in herbal remedies? Did it work as you thought it would?

**Joeleen:** *Basil. I grow seven different varieties. I start all of them from seed with great success, however, the sweet basil gives me trouble some seasons. I make cold iced tea with the leaves and added honey from our bees for sweetness. It's refreshing, especially working in the garden during July and August. Basil is an anti-inflammatory too, and for me it has worked great.*

**Q?:** What is your most used herbal remedy?

**Joeleen:** *It's not an herb, but what we think of as a weed--plantain. It grows literally everywhere. I make salves with the leaves and use it on bites, stings, or for itchiness that follows picking okra and for the dreaded mosquitoes. It works almost instantly, and I always have it on hand. It now grows in one of my raised beds along with yarrow, and it seems very happy there.*

**Q?:** If you could only plant three herbs, which three would make the cut?



**Joeleen:** ***Blue spice basil** with its hints of vanilla for iced teas, **oregano** (aides in digestion and upset stomach), and **chives**. Chives for two reasons: they are a natural pest deterrent like their cousin, the onion, and their beautiful pinkish purple blossoms make the nicest infused vinegar which is high in vitamins K, A, and C, as well as an anti-inflammatory. Chives brighten every salad they touch.*

**Q?:** Many people are starting to drink hibiscus tea to help with elevated blood pressure. Do you think teas and herb-infused drinks or decoctions are a good place for people to start when first looking to herbs for health?

**Joeleen:** *Yes. All of us have had tea at some point in our lives. It's a great place to start. If you have lemon with your water, you have already started.*

**Q?:** Are there any books you would recommend or a course you would suggest they take?

**Joeleen:** *There are really so many books. I started with Nicole Burkes' book, "Kitchen Garden Revival." That started the 'I Need To Know' landslide for me. The best advice I can give you is to read, keep reading, and read some more. Google is great, but not where most of your information should come from. The Working Man Winery in Lebanon, has a class on wild foraging every month packed full of great information. There are also classes online from herbal schools you can take such as Chestnut School of Herbal Medicine.*

**Q?:** How have herbal remedies changed the way you look at medicine?

**Joeleen:** *My herbal cabinet is the first place I go now for myself and my family.*



Growing up in Central Arkansas, I was accustomed to the summer-time heat. I have such fond memories of my childhood there, but it was HOT in the summer. In fact, when we have a particularly hot day here I will often say to my family, "Whew, it's Arkansas hot!" I didn't realize until I was a teen, that it was really hot there in the summers. I think it was the fact that by then I cared how I looked, and let me tell you: it's hard to look pretty when it's 107°. But before the vanity of the teen years, I just didn't notice. I was preoccupied with childhood adventure. We were outside all day bike riding, wading in the creek, climbing all the trees, playing ball, swimming in the lake ... it didn't matter that it was 100° in the shade. It wasn't something we thought about at all. We were having too much fun to notice!

I wish I could say I feel the same about the summer heat now. I wish I loved it, or at the very least, was more tolerant of it. It's my husbands favorite season and the hotter it is, the happier he is. He says "it's relaxing." I say "it's stifling and makes me sweaty." But I am trying to shift my enjoyment of summer since he loves it so much. And that's what made me think about being a kid in the Arkansas heat...I realized I didn't notice the heat because I was having fun. I think that is where the shift happens. We focus on something fun and it tricks our minds into forgetting about something unpleasant.

## President's Note



TONYA GARDNER

As Master Gardeners of Wilson County, we have the opportunity to focus on the great things that come in the summer! We have the gift of spending the summer working alongside our like-minded gardener friends. We swap fresh-from-the-garden recipes, discuss insect strategies, and enjoy the brilliance and abundance of the flowers we have grown and nurtured throughout Wilson County. The MGWC Garden Tour, Gardening Camp for Kids, ALL the community gardens we provide - the heat can't steal the happiness we feel when we know we helped others and fed them! And it doesn't feel much hotter than when it's time for the Wilson County Fair, but what fun those days are! Summertime as a Master Gardener of Wilson County brings about a lot of enjoyable summer events...and it WILL be hot. Though I think if we focus on how much fun it is, we can make it through.

Growing together,

*Tonya Gardner*



## Spring Fest in Fiddlers Grove

Despite the rainy weather, Spring Fest was a success! The May 4th event saw many vendors taking part in the annual celebration. There were baked goods, artisan candles, wood crafts, live music and so much more. Of course, our favorite vendor of the day was the plant sale by MGWC! There was a great selection of plants to choose from, and many shoppers asked for advice on their selections. Our master gardeners expertly provided instruction and encouragement. This sale supports our master gardeners and their projects in Fiddlers Grove.

There are still plants available, so if you are interested contact Marianne Pelletier for more information. Many thanks to all who volunteered. A very special thanks to Marianne Pelletier for her hard work in organizing this event

*Photos on this page courtesy of Marianne Pelletier and Barbara Nissell*



# General Membership Meeting Recap



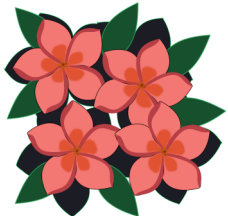
## APRIL GENERAL MEMEBERSHIP MEETING

Thanks to Tennessee's always reliable spring weather, a severe thunderstorm forced a last minute conversion of the April general meeting of the Master Gardeners of Wilson County to a Zoom presentation.

This month's speaker was Amy Dunlap, Extension Agent of the Davidson County Extension Office (pictured left). In her very informative lecture "What About All These Bugs?" she educated the membership on the most often asked questions about pest control issues. Featuring the top ten plants (mostly ornamentals), she highlighted the visual cues that signal pest damage, as well as identifying those pests and offering practical ways to manage those pesky pests!

## MAY GENERAL MEMEBERSHIP MEETING

May's meeting was held in the Veterans Building. We had a lovely meal of fried chicken and delicious sides, however the star of the meal was the beautiful and delicious cake made by our own Judy Burgess! Our big event for the evening was recognizing our 2024 graduating interns and presenting them with their certificates and a small gift bag. It was wonderful to celebrate their accomplishment and meet their guests. This year's class produced 36 graduates, and what a smart and pleasant group they are! We wrapped up the evening with a brief business meeting and reminders of upcoming events.



Congratulations to Marilyn Holysz on receiving her 10 Year pin! Well done - we appreciate all you do, Marilyn!



Judy Burgess shares her talent as a cake decorator and baker! These 2 photos courtesy of Rosemary Marshall



We proudly welcome our graduating intern class of 2024! View the complete list of our graduates on page 13 of this newsletter.

All photos from May Meeting courtesy of Deb Williams unless otherwise indicated.



# MGWC 2024 Annual Native Plant Sale

*By Connie Williams*

Wilson County Master Gardeners had a hugely successful plant sale on Saturday, May 18. Early reports indicate gross sales of nearly \$22,000, with expectations of additional sales that will take place over the next couple of months.

About 3500 plants were sold during the sale and over 350 people attended and made a purchase. The Assembly Hall at Cedars of Lebanon State Park was overflowing with shoppers looking for hardy native plants that will provide beauty as well as habitat and food sources for birds, bees, butterflies, and moths.

The offerings included many Keystone plants, which are native plants critical to the food web and necessary for many wildlife species to complete their life cycle.

Without keystone plants in the landscape, butterflies, bees, and birds will not thrive. More than 95% of our birds rely on insects supported by keystone plants.

There were long lines at some points during the day, but the mood of the customers was positive throughout.

Plant lovers and new gardeners studied illustrated charts of each plant, describing plant requirements, nutritional and sunlight needs, and lists of supported pollinators.

They talked to and asked questions of master gardener helpers and purchased plants to use in their yards or in public spaces devoted to nature.

The annual sale is a major fundraiser for our organization, but even more important, it's an educational resource for our communities and a support for our local environment.

*Continued on next page*



*Native Plant Sale*  
*Continued from previous page*



The native plant sale is much more than a once-a-year sale. It's a native plant program that requires work and planning all year long. The successful history of the sale is a tribute to the founder and long-time leader, Linda Robertson, who continues to learn and teach interns and Master Gardeners about native plants.

And this year's program success can be directly attributed to program leader Debbie Williams. Debbie, who has been a longtime native plant volunteer, has provided incredible leadership and hundreds of hours of work and volunteer coordination. She has built a team of equally devoted volunteers who helped with the preparation of the plants and helped staff the sale.

This year, the native plant sale took the first step toward automating our inventory, checkout, and accounting systems, using tools that will be useful for many other WCMG programs and purposes. Our organization has invested in pot and tree labeling software and hardware with inventory capabilities. We've also begun the transition to an automated checkout and reporting system, with hopes of moving toward barcoding for our plants as the native plant sale grows.

In addition to returning master gardener volunteers, this year's program and sale benefited greatly from the involvement and commitment of many members of our intern class. Wilson County Master Gardeners are a better organization because of their drive and enthusiasm.



Many, many thanks to all who made May 18 a wonderful day for our organization and for our local ecosystem!

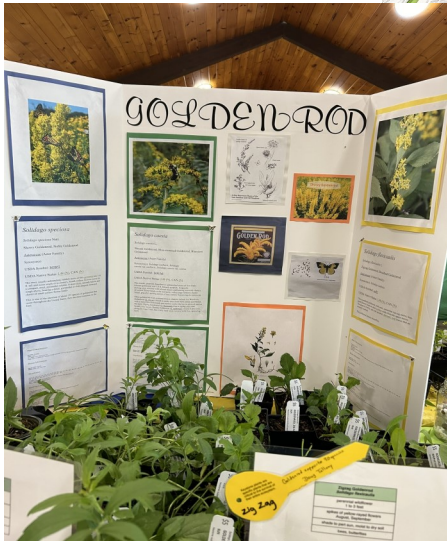


*Photos from the Native Plant Sale courtesy of Lori Bornholtz, Deanna Jackson, Tina Benson and Rosemary Marshall*

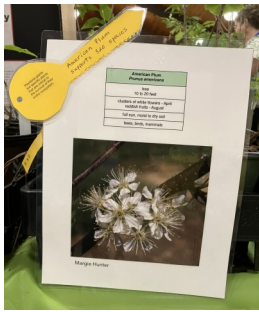
Native Plant Sale  
Continued from previous page



More Native  
Plant Sale Photos



Native Plant Sale  
Continued from previous page



EVEN MORE  
Native Plant  
Sale Photos





# Conservation Conversations

*A series featuring land stewardship, sustainability, and related topics.*

*By Lauren May*



## NestWatch: Citizen Science in Your Back

The Cornell Lab of Ornithology's NestWatch program provides resources and a framework for individuals to monitor nesting birds and report their observations through a standardized process. This data is included in a nation-wide database and provides valuable information that ornithologists could never hope to collect themselves at the scale that the program's citizen scientists do. This information is crucial to identifying population trends in many bird species.

### HOW TO PARTICIPATE

- 1 Take the online quiz to get certified
- 2 Find nests
- 3 Record data
- 4 Submit online or with the mobile app

NestWatch website, <https://nestwatch.org/>, includes clear information on how to locate and identify nests, online forms or a mobile app for data collection, protocol for monitoring nests with minimal disruption to the birds, and much more.

### WCMG Polls

*Let's see what WCMGs have to say. These polls are short and informal: Share your thoughts on the topic, whether it's news to you or you teach courses about it!*

#### CURRENT

NestWatch:

Citizen science in your backyard

[Survey](#)

[Results](#)

#### PAST

Countertop Composters:

[Survey](#)

[Results](#)

Great or Greenwash?

Tennessee Smart Yards:

[Survey](#)

[Results](#)

Ecological Landscaping for Individuals

Ask Lucas



### MGWC Member Lauren May asks the question:

Does pre-emergent herbicide kill seeds as they try to germinate, or does it keep seeds from germinating but leave them viable in the seedbank?

### Lucas Responds:

Pre-emergents work by preventing the seed from actually growing. They do not kill the seeds that are in the soil. If you apply the pre-emergent herbicide after the weeds are germinated, the weeds that are germinated will survive and not be harmed. Weed seeds are everywhere. A single crabgrass plant, if left to go to seed, can produce over 100,000 seeds. Normally these herbicides must be incorporated into the soil since weeds are already dispersed throughout the soil.

Do you have a question for Lucas? Please email us at [WCMGNewsletter37087@gmail.com](mailto:WCMGNewsletter37087@gmail.com) and we will try to publish in a future issue!

# Spring Fling at Stonebridge

On April 14, the Stonebridge subdivision in Lebanon sponsored Spring Fling at Stonebridge. This event, organized by Master Gardeners of Wilson County who are residents, provided the neighbors with all sorts of gardening information. The topics covered were: Attracting Pollinators with Native Plants, Growing Tomatoes in Buckets, How to Have a Smart Yard, Growing Vegetables Vertically, Mosquito Buckets of Doom, Mole or Vole?, Soil Testing How-To's, Creating a Monarch Waystation, How to Be a Master Gardener, Ask a Master Gardener. The City of Lebanon Stormwater Division was also present and provided great information on protecting TN waterways.



Spring Fling was well attended with over 100 residents stopping by to learn from our own master gardeners. This highlights what our Master Gardeners of Wilson County do so well: sharing their garden knowledge with enthusiasm! This event is definitely a model that other HOAs could use to educate their communities on gardening in a responsible and eco friendly way. Many thanks to those who gave of their time and efforts!



*Photos on this page courtesy of Tonya Gardner*



*By Lori Bornholtz*

One of my husbands favorite phrases is “Be sure you are using the right tool for the job”. I hear it often, whenever we are cooking, cleaning, doing home maintenance and of course, gardening!

I am notorious for grabbing the closest thing at hand and trying to make it work. I have ruined many a hand pruner using it as a weeding tool. But I have learned from experience that the RIGHT tool is the best tool ---and the care, cleaning and storage of these tools is equally important once your task is finished.

There are many hand tools that are essential to have on hand. Good leather gloves, trowels of various widths, garden fork, weeding tools, and for those of you like me with bad knees and back—a solid stool to plunk down on! But for me personally, the most important tool is the trusty hand pruner. As a novice gardener, I initially thought they were all the same....but I have come to understand the different types and the role they play in caring for your plants.

- ⇒ **Bypass Pruners** – Good for green wood or flexible stems. The blades bypass each other like scissors, with one blade sharp and the other dull. This pruner will make the cleanest cut.
- ⇒ **Anvil Pruners** – Good for dead woody stems and small branches. Single flat edge blade that closes against a flat metal anvil. Not good for pruning as this tool will tend to crush the green stem versus giving a clean cut, doing damage to the plant.
- ⇒ **Straight Blade Pruners** – Good for fine detail work as it is much more precise. Use for deadheading, cut flowers and delicate pruning.
- ⇒ **Ratchet Pruners** – Sturdy and more ergonomic. Very helpful to avoid repetitive injury or for those with weaker hands, arthritis or tendonitis.



Think about adding these unique tools to your collection if you don't already have one:



**The Hori Hori Knife**, otherwise known as the Japanese Digging Knife. A sturdy concave blade made of carbon or steel, it is great multi-purpose tool for weeding, cutting roots, transplanting, removing plants, sod cutting, twine or rope cutting, measuring depth and splitting perennials. Very sharp so be sure to store in a sheath!

I received this knife as a Mothers Day gift....I have yet to use it but can't wait to get started, and especially look forward to using it to divide my daylilies!

**Cultivator and Long Handled Garden Hoe.** A two-in-one hand tool with a lengthy 18" handle, featuring a swan neck hoe on one side and a three-prong cultivator on the other side.

Perfect for use in raised beds—the cultivator is great for loosening and smoothing soil while the hoe very handy to tackle those pesky weeds. I don't have this one yet but it is next on my wishlist.

Happy Gardening!



THIS RECIPE IS  
FROM THE MQWC  
COOKBOOK  
PUBLISHED IN 2004.

## CHOCOLATE CHESS PIE

Name : Carol Greer

Cook Time : 40 min

### INGREDIENTS

1 Pie shell, unbaked  
1 1/2 cup sugar  
3 Tbsp cocoa powder  
1/4 cup margarine, melted  
2 eggs, slightly beaten  
1/8 tsp salt  
1 small can evaporated milk  
1 tsp vanilla

### DIRECTIONS

Mix sugar, cocoa, and margarine. Stir well. Add eggs and beat with electric mixer for 2.5 minutes. Add salt, milk, and vanilla. Pour filling into pie shell. Bake at 350 degrees for 40 minutes.

# Be Healthy KIDS

## Summer Gardening Camp



Gardening

Nutrition

Fun!

Hands-on  
Activities

Fitness

Cooking\*



Wilson County Fairgrounds - Fiddlers Grove

**JUNE 17 - 21, 2024**

1st, 2nd, & 3rd Grade

**JULY 8 - 11, 2024**

4th, 5th, & 6th Grade



Scan Here!

**NO COST**

**Lunch Provided**

**Sponsored by:**



Scan Here!



[www.VineBranchFellowship.org](http://www.VineBranchFellowship.org)

\*Cooking classes are for 4th - 6th grade only.

## Wilson County Farm Days

Wilson County Farm Day was held on May 7, 2024. More than 700 second graders from all over Wilson County participated in educational activities to learn all about agriculture. There were more than 20 educational stations set up that were interactive and hands-on from farm animals to lives bees and gardening. Designed to teach the children where our food comes from, our own Master Gardeners helped them plant a bean so they could take it back to school and watch it grow. They were taught that there are 5 important things that all living things need to grow: Air, water, sunlight, food and most important...LOVE. Thanks to Vicki Folsom and all of her master gardener volunteers for investing their time and talents in our future gardeners and farmers!

(A make up day for Day 2 of Farm Days has been scheduled for later in May.)



*Farm Days photos  
courtesy of Deanna  
Jackson*

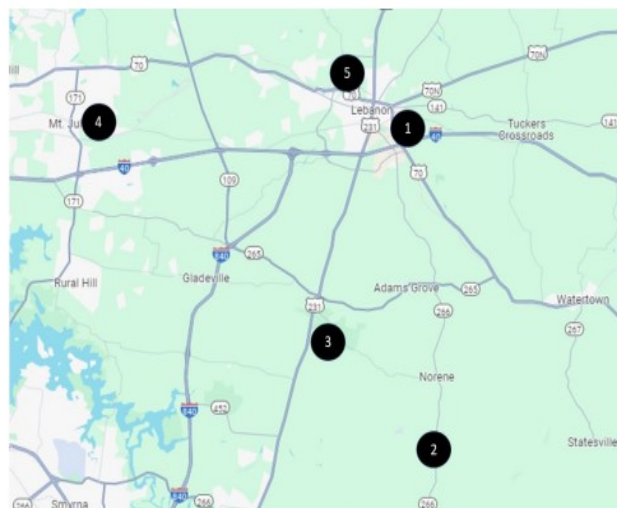


## MASTER GARDENERS OF WILSON COUNTY

# GARDEN TOUR

Saturday, June 8, 2024  
9am-3pm

## TOUR MAP



## TOUR LOCATIONS

1. **FIDDLERS GROVE**  
945 E. BADDOUR PKWY  
LEBANON, TN 37087
2. **HOLMAN FARMS**  
283 SALEM RD  
LEBANON, TN 37070
3. **CEDARS OF LEBANON**  
328 CEDAR FOREST RD  
LEBANON, TN 37090
4. **LABORS OF LOVE**  
1075 CHARLIE DANIELS PKWY  
MOUNT JULIET, TN 37122
5. **LEBANON COMMUNITY & EDUCATION GARDEN**  
670 COLES FERRY PK  
LEBANON, TN 37087

### STOP 1: FIDDLER'S GROVE GARDENS (BUTTERFLY GARDEN, DEMO GARDEN, SHADE GARDEN...)

Fiddlers Grove Historic Village was built on 10 acres of rock, trees and bramble. In 1991, volunteers from the Wilson County Fair met and discussed on how to best utilize this area. Since many of the old buildings throughout Wilson County were being torn down due to development and history being lost, it was decided to preserve this history and to use it as an educational tool. The Wilson County Master Gardeners came in to play when J.W. McGuire, Wilson County Extension Director at the time, started the program. Hale Moss, President of the Fair, was one of the first interns to take the class and he was instrumental in making Fiddlers Grove the Master Gardeners Outdoor Classroom. Master Gardeners take care of over 16 flower beds, flower pots and the arboretum. Some of the flower beds are themed and include the Monarch Way station (butterfly garden), Herb Garden, Shade Garden, Rain Garden and many others. This project is funded by a plant sale that is held the first Saturday in May during Spring Fest in the Grove. Money raised during this sale is used to purchase plants, fertilizer, soil and tools needed to maintain the flower beds.

### STOP 3: CEDARS' OF LEBANON

Over a decade ago, a conversation between a park manager, Buddy Ingram, and Linda Robertson, a master gardener and citizen scientist, led the creation of the Dixon Merritt Butterfly Garden and Native Plant Garden. Over the past years, Master Gardeners of Wilson County have worked in the garden under the guidance of Linda Robertson and Kathy Powers and have created the most beautiful and well-kept garden in the State of Tennessee Park System. Come see this garden and it just might inspire you to start a little native plant garden at your home.

### STOP 4: LABOR OF LOVE COMMUNITY GARDEN

Labor of Love Garden is exactly what her name implies. The Master Gardeners that dedicate their blood, sweat, backs, knees, and tears believe in her mission. That mission is to educate and teach others how to grow good food for themselves. We teach them many different ways to do this. Our goal is also to provide food to organizations that feed people. In 2023, the garden fed more people than ever through organizations like Cedar Croft Home, Scan, and Room In the Inn. It also provides a place for Master Gardeners and interns to obtain their hours.

### STOP 2: HOLMAN FARMS

Holman Farms is a lovely 60 acre farm situated just south of Norene. While our farm focuses mainly on raising Dorset Sheep, we also have a large vegetable garden that we refer to as "the kitchen garden". Additionally, Holman Farms features 3 large landscaped beds containing approximately 150 different colors of day lilies as well as a growing collection of unique and rare plants.

### STOP 5: LEBANON COMMUNITY AND EDUCATION GARDEN

The Lebanon Community and Education Garden was installed by Vine Branch Fellowship, in partnership with the City of Lebanon to help create a healthier community. We hope to encourage citizens of all ages to eat fruits and vegetables, while also educating them about gardening. The garden is open to the public from dawn to dusk everyday throughout the growing season to provide fresh produce to the community.



# Meet the Master Gardener



David & Carol Greer



## Where are you from?

David - Lebanon, TN  
Carol - Danville, VA

## How long have you been gardening?

David - Since I was 10-years-old.  
Carol - Since around 2002.

## What is your favorite plant to grow?

David - Tomatoes  
Carol - Geraniums

## What is your favorite garden tool?

David - Spade  
Carol - Spade



## What are your favorites?

### TREE

David - Oak Carol - Dogwood

### VEGETABLE

David - Tomato Carol - Tomato

### FLOWER

David - Mums Carol - Hydrangeas



## Do you have a gardening trick or tip that everyone should know?

David - Put a nail beside your tomato plants so the cut worms won't cut down your tomato plants

Carol - Put pulverized eggs shells around tomato plants for calcium



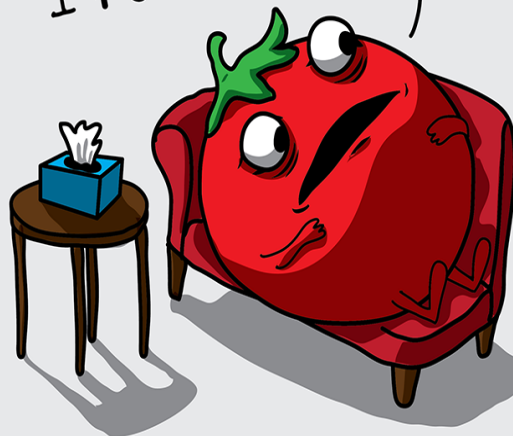
## What advice do you give new gardeners?

David - Never give up!

Carol - You have to amend your soil.



I know I'm supposed to be a fruit, but I feel like a vegetable...



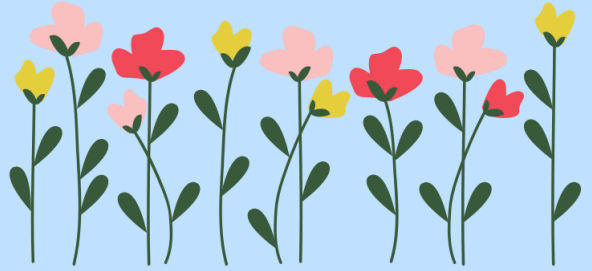
theawkwardyeti.com

## CONGRATULATIONS 2024 MGWC GRADUATES

Krystal Bland  
Chelsea Bradberry  
Danny Bradberry  
Sara Boswell  
Kate Crawford  
Kelly Darpino  
Doug Davis  
Tricia Davis  
Skylar Edwards  
Pat Fannin  
Peggy Fannin  
Andy Franek  
Debbie Franek  
Sarah Goughnour  
Gina Granstaff  
Sonia Higgs  
Jamie Howard  
Michael Humeny  
Jennifer Johnson  
Sharon Johnson-Fox

Joshua McBrien  
Linda McCain  
Pam McPeak  
Srinivasulu Mudara-  
gadda  
Avery O'Brien  
Brei Panzer  
Cheryl Puhl  
Larry Puhl  
Adrienne Ratmanskyy  
Prasanna Srinivasan  
Carla Takacs  
Brittany Tharaldson  
Lora Wade  
Hannah Williams  
Tammie Willis  
Michael Wright

# Volunteer Projects



## **Demonstration Vegetable Garden**

The Demonstration Vegetable Garden is a showcase garden for Fiddlers Grove and Wilson County Fair visitors. We prepare the soil; plan the garden plots; plant, water, fertilize, weed, and harvest; take pride in a great project; and then put the project to bed at the end of the season. Choose to adopt a plot of your own in the garden or participate in scheduled workdays.

**Chairperson:** Barbara Nissel, [barbaranissel@wilsoncountymg.org](mailto:barbaranissel@wilsoncountymg.org)

## **Mt. Juliet Community Garden (Labor of Love Garden)**

The Community Garden at Charlie Daniels Park is a working vegetable garden with raised beds and regular rows. The garden not only grows vegetables, it also grows friendships that are priceless. The blessings that you will receive from giving a senior citizen a fresh tomato, cucumber or pepper will leave a lasting mark on your heart.

**Co-Chairs:** Deb Williams, [debwilliams1950@gmail.com](mailto:debwilliams1950@gmail.com), and David Bates, [david.bates00@yahoo.com](mailto:david.bates00@yahoo.com)

## **Mt. Juliet Monarch Waystation**

This garden in Charlie Daniels Park has just been recently certified as a butterfly waystation.

**Chairperson:** Patty Hoag, [phoag@tds.net](mailto:phoag@tds.net)

## **Cedars of Lebanon Monarch Waystation**

This garden is located behind the Nature Center in Cedars of Lebanon Park. It was planted with plants, trees and shrubs that attract and support butterflies.

**Co-Chairs:** Rosemary Marshall, [marshall2171@sbcglobal.net](mailto:marshall2171@sbcglobal.net), and Deb Shields, [debshields@comcast.net](mailto:debshields@comcast.net)

## **Fairgrounds Demonstration Flower Beds**

The Demonstration Flower Beds at the James E. Ward Agricultural Center are the classroom and lab for Wilson County Master Gardeners and Interns. In partnership with the Wilson County Fair and Fiddlers Grove, we create and maintain beds that are educational for ourselves and the public. We show what grows in full shade, dapple shade, and full sun. There are a wide range of plants installed throughout the grounds that include today's varieties and heirloom varieties.

**Chairperson:** Marianne Pelletier, [breezin1usa@yahoo.com](mailto:breezin1usa@yahoo.com)

## **Native Plant Sale**

Each year this committee grows and purchases seeds, plants and trees, nurtures them throughout the early growing season, and then hosts a major fundraiser for our organization. Native plants are ideally suited for our area and provide food and habitat for pollinators, other insects, birds, and wildlife. This project needs help now in prepping for the sale on May 18.

**Chairperson:** Debbie Williams, [littledebbiewilliams@gmail.com](mailto:littledebbiewilliams@gmail.com)

# Wilson County Master Gardeners Volunteer Projects

*(continued from previous page)*

## Baddour Parkway Arboretum (BPA)

WCMGs with an interest in trees provide care and maintenance of trees in the arboretum located in Fiddlers Grove. Choose to participate in workdays or adopt a tree to become a Tree Steward. Other BPA activities include classes in topics such as Pruning, Beginning Tree Identification, and Winter Tree Identification. BPA needs help now with pruning and mulching arboretum trees. The project team is also looking for additional tree stewards.

**Chairperson:** Mary Ellen Lewis, [maryellenlewis123@gmail.com](mailto:maryellenlewis123@gmail.com), Judy Burgess, [judyburgess526@gmail.com](mailto:judyburgess526@gmail.com), and Chad Burgess, [silent7@hotmail.com](mailto:silent7@hotmail.com)

## Mt. Juliet Library

WCMG volunteers maintain perennial and shrub beds at the main entrance and three smaller gardens in the back. The gardens are designed to attract butterflies and provide seeds for birds. Two workdays are scheduled in the spring to add soil amendments, clean up and mulch the beds. Once a week during the summer we water and remove weeds.

**Chairperson:** Patti Stein, [mommabear329@yahoo.com](mailto:mommabear329@yahoo.com)

## H.G.T.V. (Heat Gardening Team Volunteer)

In coordination with Vine Branch Fellowship, this project is working to bring plant and gardening education into Wilson County schools. Vine Branch Fellowship manages school gardens at several elementary schools as well as at the Senior Center and Wilson County Help Center in Lebanon.

**Co-Chairs:** Alex Scott, [alex@vinebranchfellowship.org](mailto:alex@vinebranchfellowship.org), and Shene Scott, [shene@vinebranchfellowship.org](mailto:shene@vinebranchfellowship.org)

## Spring Fest in the Grove & Artisan Show

Spring Fest is held the first Saturday in May. This year it will be May 4, 10am-4pm. This event is a partnership between Fiddlers Grove and the Wilson County Master Gardeners. The plant sale held during the event is a fundraiser for the Wilson County Master Gardeners flower beds. We have vendors that are set up throughout the Grove, and artisans will be demonstrating their skills including blacksmiths, weavers, and woodcarvers. There will be music playing throughout most of the day. We will need volunteers the day before the event and day of for setup, showing vendors where to set up, welcome table, and to man the plant sale. This event is at no cost to the Wilson County Master Gardeners. We are able to use the Grove at no charge and the plants for the plant sale are funded by the fair.

**Chairperson:** Marianne Pelletier, [breezin1usa@yahoo.com](mailto:breezin1usa@yahoo.com)

## Wilson County Fair Projects

Wilson County Flower Show—**Chairperson:** Joni Wohnrade, [joni.wohnrade@hotmail.com](mailto:joni.wohnrade@hotmail.com)

Wilson County Fruits & Vegetables Competition—**Chairperson:** David Greer, [david.bates00@yahoo.com](mailto:david.bates00@yahoo.com)

Tennessee State Wine Show—**Chairperson:** Marianne Smith, [marianneattheranch@gmail.com](mailto:marianneattheranch@gmail.com)

# MGWC Project Updates & Needs

Master Gardener projects are in full swing now that spring is leading into summer. Nearly every project leader is asking for volunteer help through our Facebook page and regular emails to our distribution list. Please check those out and get in touch with the project leaders if you have a particular interest and can help. Two of our projects have expressed an urgent need.



Barbara Nissel needs help with the **Demo Garden**. Planting needs to be completed in May so that the garden will be ready for this summer's fair. She is looking for regular or occasional volunteers who can help with this awesome teaching garden in Fiddlers Grove. Barbara is also looking for a few volunteers who want to "adopt" a particular section of the garden to cultivate and manage during this growing season, leading up to the fair in August. The Demo Garden is a beautiful space that offers many educational opportunities about where our food comes from. Please let Barbara know if you can help.

Calling all Wilson County Master Gardeners living in or close to Mt Juliet. Help is needed in the weekly watering and monthly weeding of the **Mt Juliet Library Garden**. It's two small gardens on the side and one large garden in the front filled with a majority of perennials. Only an hour or so once a week would be a great help. Call or text Patti Stein at 315-727-1473. Many hands make for a light load!



Uthort

MASTER GARDENER  
Uthort  
INSTITUTE OF AGRICULTURE  
THE UNIVERSITY OF TENNESSEE

2024 CONSUMER  
HORTICULTURE AND  
EXTENSION MASTER GARDENER

TEMG Intern Training

Jan. 30-Apr. 30

- Synchronous and Asynchronous options
- 12 weeks together Tues. mornings 10-11:30 ET/ 9-10:30 CT
- Local personality, cohesive content

LIVE WEBINAR

Horticulture Webinars- 2 great formats

- May teaching webinar series on home food crops
  - every Tuesday at 12:30 ET/ 11:30 CT in May
  - promo/sign up in late Feb/early March
- Office Hours live Q and A June through September
  - Fridays at 10 ET/ 9 CT

5/7, 5/14, 5/21, 5/28

6/7, 7/12, 8/2, 9/6

Great Field Days and Events

Fruits of the Backyard Field Day in Spring Hill

Summer Celebration is off in 2024 and back in 2025

Fall Gardener's Festival in Crossville

June 11th

August 27th

2024 Welcome Home Series

Live and local county training

Lectures and Q and A together for 60 minutes

2024 will be 4 part and landscape focused

Brief hands-on demos by agent- new for 2024

Updated for 2024-

Oct. 1, 8, 15, and 22

at 5:30 CT, 6:30 ET

2024 TEMG State Conf.

Statewide volunteer conference hosted by Williamson and Davidson Counties

Oct. 9-11

MASTERGARDENER.TENNESSEE.EDU

UTHORT.COM

MAY-JUN 2024 p.17

# Upcoming Events



## May

- 28** WCMG Executive Board Meeting; 6:30-8pm; Fiddlers Grove, Master Gardener Building

## June

- 4** WCMG Membership Meeting; 6:30pm; Fiddlers Grove, Veterans Building  
**8** Master Gardeners of Wilson County Garden Tour; 9am-3pm; five great local garden stops  
**17-21** Summer Gardening Camp for 1st-3rd Graders; Wilson County Fairgrounds  
**25** WCMG Executive Board Meeting; 6:30-8pm; Fiddlers Grove, Master Gardener Building

## July

- 2** WCMG Membership Meeting; 6:30pm; Fiddlers Grove, Education Building  
**8-11** Summer Gardening Camp for 4th, 5th & 6th Graders; Wilson County Fairgrounds  
**30** WCMG Executive Board Meeting; 6:30-8pm; Fiddlers Grove, Master Gardener Building



W 436

# Tennessee Home Fruit and Vegetable Garden

2024 CALENDAR

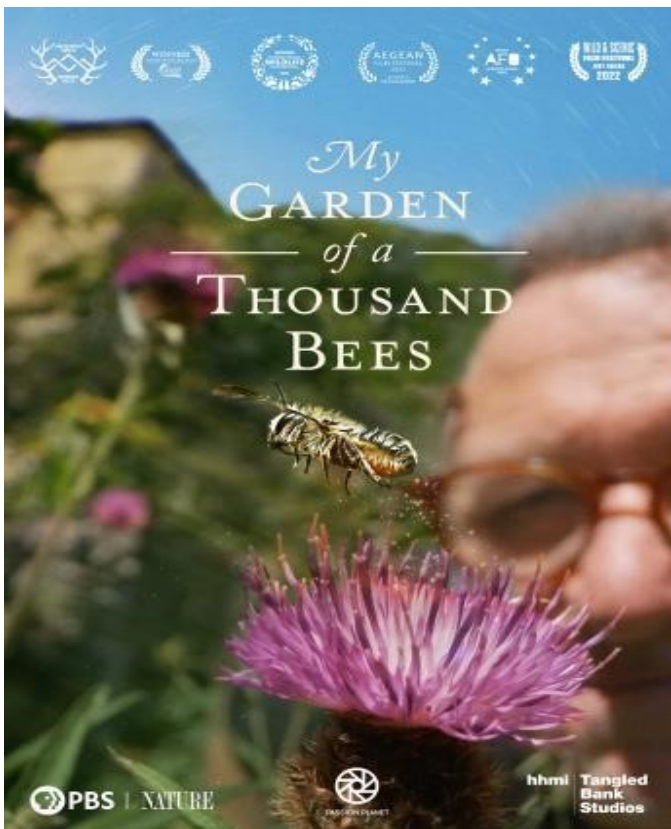
## Review

***Review submitted by Tonya Gardner***

“My Garden of A Thousand Bees” is a superb documentary by Martin Dohrn, a veteran wildlife cameraman. During the spring of 2020 when the COVID lockdown was beginning, he began to film all the bees he could find in his tiny garden in Bristol, England. An expert at exploring the macroscopic world, he begins to film a variety of wild bees and records their incredible environment. Dohrn studied more than 60 species of bees in all shapes and sizes. From Britain’s largest bumblebees to scissor bees that are the size of mosquitos, he shared their incredible diversity and behaviors.

Filmed with his one-of-a-kind lens, forged on his own kitchen table, he captures what sets each bee species apart from one another and the unique characteristics each species possesses. By the end of the documentary, he can identify individual bees by just looking at them and even gives some of them names. He follows one particular bee throughout the course of her life and films her extraordinary world on her level.

Dohrn narrates with such passion and charm. The documentary is endearing, funny and filled with insights from the natural world never recorded before. “My Garden of A Thousand Bees” will entertain and enlighten you. You will have a new perspective on bees and will forever look at the incredible bee world in a more respectful way.



# 2024 WCMG Scholarship Winner

***Kirsten Pigg***  
***Mt. Juliet***

Wilson County Master Gardeners have selected a most deserving winner for our inaugural college scholarship program! Kirstin Pigg, a graduating senior at Mt. Juliet High School, will receive the award of \$1500 at our June WCMG meeting.

Kirsten served as Vice President of the MJHS FFA for three years and is currently the President. She served as the Mt. Juliet High School Greenhouse Manager and has competed on the MJHS FFA Floriculture Team. Her team placed 5<sup>th</sup> in Middle Tennessee, and she received the 1<sup>st</sup> place award for top individual.

Kirsten has excelled in plant science and horticulture classes during high school and has been on the Principal's List for academic achievement during all four years of high school.

In addition to schoolwork and FFA leadership, Kirsten has chaired the MJHS Operation Christmas Child Committee and has participated in numerous other volunteer projects such as tornado clean-ups, Angel Tree, Salvation Army, and preparing goodie bags for senior citizens and for military personnel.

Kirsten has grown up on a family farm in Wilson County and has maintained responsibilities on the farm as part of her family life. She is planning to attend Middle Tennessee State University this fall and will be enrolled in Agriculture, with a likely major in plant science.

We hope to be able to keep in touch with Kirsten as she enters her college course of study and will invite her to WCMG activities and events. We wish her all the best and look forward to seeing her succeed in Tennessee agriculture in the coming years!

The WCMG scholarship committee was chaired by Maryann Hicks and included committee members Sally Swain, Alex and Shene Scott, and Connie Williams.

# Save the Date TEMG State Conference on October 9-11, 2024 hosted by Davidson and Williamson Counties in middle Tennessee!



**Registration is planned to open in late April. but here is a sneak peak of some of the great fun coming our way at the fall conference!**

Wednesday October 9th- Kick off session with good and fellowship focused on community food and horticulture in middle Tennessee

Thursday October 10th

- Morning tours focused on horticulture in middle Tennessee led by our Williamson and Davidson EMG hosts.

-Afternoon sessions will be interaction focused on topics such as diagnostics, local food, leadership in local groups, plus key current areas of education such as roles of turfgrass and turf replacements, edible landscapes, and native plants.

-Evening food and celebration of Tennessee Search for Excellence winners

Friday October 11th

-Morning hands-on workshops to support your horticulture and plant knowledge and fun.

-Afternoon nursery and greenhouse tours to support your plant visiting and purchasing habit!



## 2024 EXECUTIVE COMMITTEE

### PRESIDENT

**Tonya Gardner** [thetonyagardner@gmail.com](mailto:thetonyagardner@gmail.com)

### VICE PRESIDENT

**Joni Wohnrade** [joni.wohnrade@hotmail.com](mailto:joni.wohnrade@hotmail.com)

### SECRETARY

**Sara Chodl** [sarachodl@wilsoncountymg.org](mailto:sarachodl@wilsoncountymg.org)

### TREASURER

**Carol Stroud** [carolgstroud@wilsoncountymg.org](mailto:carolgstroud@wilsoncountymg.org)

### CERTIFICATION OFFICER

**Deanna Jackson** [dmjackson1@dtccom.net](mailto:dmjackson1@dtccom.net)

**Lucas Holman**  
**County Director**  
**925 East Baddour Parkway Suite 100**  
**Lebanon, TN 37087**  
**Office: 615-444-9584**  
**Email: [lhorman1@utk.edu](mailto:lhorman1@utk.edu)**

## COMMUNICATIONS COMMITTEE

### CHAIR

**Tonya Gardner** [thetonyagardner@gmail.com](mailto:thetonyagardner@gmail.com)

### STAFF

**Lori Bornholtz** [lamborney@gmail.com](mailto:lamborney@gmail.com)

**Lauren May** [lauren@andymay.com](mailto:lauren@andymay.com)

**Kami Norwell** [kamikaye37@gmail.com](mailto:kamikaye37@gmail.com)

**Connie Williams** [connie.g.williams@comcast.net](mailto:connie.g.williams@comcast.net)

**Deb Williams** [debwilliams1950@gmail.com](mailto:debwilliams1950@gmail.com)